

## INDEX

	Page
Actuator Shaft (M-R).....	3
Axle .....	4
Bed Assembly .....	5
Bed Bow .....	5
Bed Rack Extrusion (M-R).....	3
Bed Slide (metal) (B-M-R).....	3
Bed Slide (plastic) (B-M-R).....	3, 10, 11
Bed Timing .....	1, 8, 9
Bow Kit .....	25
Canopy Extrusion (M-R).....	13
Coupler .....	5
Coupler Latch Kit .....	5
Dinette Table .....	1
Door Assembly Adjustment (E-F-S).....	2
Door Assembly Replacement (E-F-S).....	3
Heater Installation .....	14, 15
Hub Assembly (all models).....	4
Leveling Leg (body).....	4, 6
Paint Colors .....	21, 22
Panel Replacement (body).....	3, 4
Parts Kits .....	26, 27, 28
Reinforcing Angle .....	4
Reinforcing Plate (frame '67 Ramada).....	2
Road Cover Adjustment (Eagle).....	2
Road Cover Latch Adjustment (M-R).....	1, 7
Road Cover Latch Replacement .....	3
Road Cover Replacement .....	3
Road Cover Seal (M-R).....	3
Screen Door Adjustment .....	1
Seal Road Cover & Body .....	2
Shackle Mounts (E-F-S).....	4
Springs (axle E-F-S).....	4
Sprockets .....	3, 12
Step Door Adjustment .....	1
Table Adjustment (B-M-R).....	1
Tent Attachment (E-F-S-B).....	18, 19
Tent Attachment (M-R).....	20
Tools (Kohler Engines).....	29
Tools (Recommended Tool List).....	24
Tools (Vesely Company).....	23
Towing Car (camp trailer).....	16
Towing Car (travel trailer).....	17

## ADJUSTMENT

## Road Cover Latch (M-R)

See drawing (Page 7) "How to Adjust Mesa-Ramada Road Cover Locks." Occasionally a latch may have to be relocated; rarely is more than one latch effected. Relocation should take about 5 min.

## Step Door

With door closed, loosen the two nuts and bolts holding step door to the channel supports. Push bottom of door in until both sides of the door makes a good seal. Tighten the two nuts and bolts. If nuts will not stay tight, use double nuts on each bolt. Time - 10 min.

## Screen Door

If screen door is out of alignment, loosen screws holding screen door roller guide extrusion to road cover. Move both roller guide extrusions until door frame does line up with the body opening, then re-tighten the screws. Time - 10 min.

## Bed Timing

See drawing "Bed Timing Procedure" (Page 8). Should beds not stay in time, see drawing "Suggestions to Remedy Loose Drive Chain or How to Prevent Beds from Jumping Time" (Page 9). Time - 5 min. per corner.

## Tables

Should the dinette table tend to fall between the dinette seats during travel, one seat box should be moved toward the center of the trailer. Remove screws holding seat box to floor, move seat box enough to prevent table from falling between seat boxes and replace the screws. Time - 10 min.

Adjustment con't

Seal Road Cover ('67 M-R)

Run a bead of 3M Sealer along all seams. 3M Sealer may contract enough during drying to allow large spaces to again open. For best results, check the unit after the sealer has had a chance to dry and reseal any opening which may have reappeared. Time - 10 min.

Seal Body (B-M-R)

Run a bead of 3M Sealer along all seams and around wheel wells. 3M Sealer may contract enough during drying to allow large spaces to again open. For best results, check the unit after the sealer has had a chance to dry and reseal any opening which may have reappeared. Time - 15 min.

Install Reinforcing Plate (frame)  
(Early '67 Ramada only)

Time - 60 min.

Align Door (Eagle-Falcon-Scout)

Time - 15 min.

Align Road Cover (Eagle)

Time - 30 min.

REMOVE AND REPLACE (Parts) (Body)	TIME
1. Road Cover (M-R)	40 min.
2. Road Cover (Eagle)	30 min.
3. Road Cover Seal (M-R)	Usually only one piece. 15 min.
4. Sprocket (M-R)	See "Sprocket Repair Procedure," Page 12 30 min.
5. Road Cover Latch	15 min.
6. Actuator Shaft (M-R)	30 min.
7. Bed Track Extrusion (M-R)	Remove and replace one or two 60 min.
8. Bed Slide, Metal (B-M-R)	20 min.- one, 30 min.- two
9. Bed Slide, Plastic (B-M-R)	See drawing "Plastic Bed Slide Replacement Procedure," Pg. 10 & 11 60 min.
10. Step Door (B-M-R)	15 min.
11. Door Assembly (E-F-S)	15 min.
12. Rear Panel	
A. Ramada, Mesa II & III and Buffalo	155 min.
B. Mesa	115 min.
C. Eagle-Falcon	120 min.- two, 60 min.- one
D. Scout	110 min.- two, 55 min.- one
13. Front Panel	
A. Ramada	135 min.
B. Mesa III	150 min.
C. Mesa I & II and Buffalo II	130 min.
D. Eagle	155 min.
E. Falcon	140 min.
F. Scout	100 min.

NOTE: Converter itself must be adequately grounded from the case of the converter to the skin of the coach.

Test No. 8: Trailer wired correctly using 3-prong plug. No shorts in trailer plugged in properly to a 3-prong receptacle.

NOTE: Trailer court wired improperly with black and white reversed.

RESULT: Cheater will buzz.

NOTE: This is a condition that, although you are using a 3-prong plug and a 3-prong receptacle, in most cases would not be dangerous in as much as third wire or green wire ground would have blown the main fuse if there had been a short in the travel trailer. The one possibility that could result in a dangerous hookup would be if the trailer could result in a dangerous condition. This situation has a simple solution the customer merely uses his Cheater and converts to a 2-prong system, thereby using his "Cheater Tweeter" to correct for mis-wiring by a trailer court.

We hope these tests have covered all situations that we can conceive in which a trailer owner may obtain a dangerous voltage on the skin of his travel trailer. Fortunately, a customer need only know three basic modes of operation:

1. The "Cheater Tweeter" would sound one way and won't the other, which indicates a safe condition.
2. The "Cheater Tweeter" won't sound in either direction, would indicate a possible dangerous condition.
3. "Cheater Tweeter" sounds in either direction which indicates a positive short to hot wire and definitely a dangerous skin condition, with a 2-prong plug and receptacle.

The above tests indicate a very stable condition and very positive results from the "Cheater Tweeter" and indicates a reliable detection device.

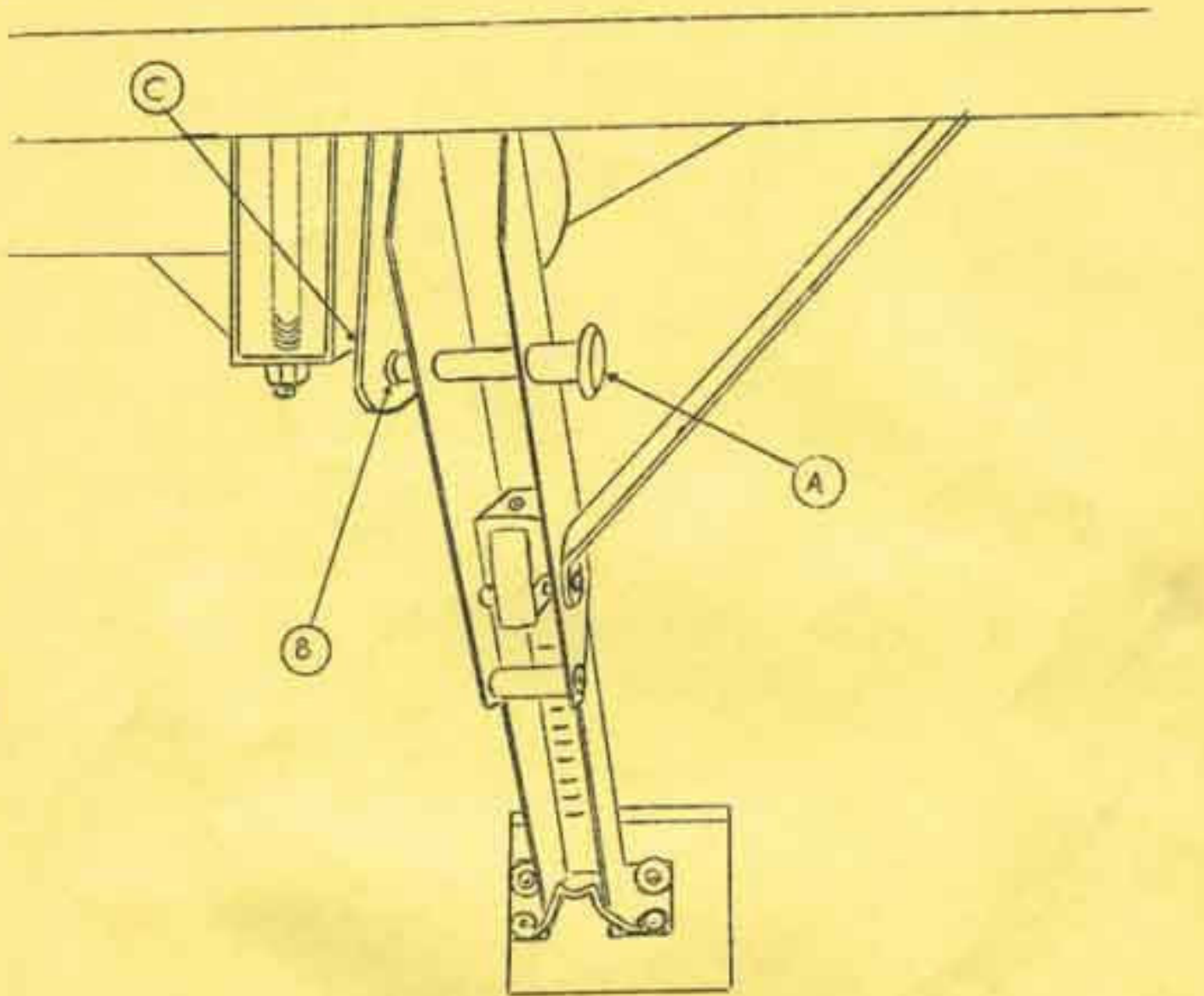
These test conditions represent all the situations that we can think of with the corresponding results. We hope that the preceding leads to a better understanding of the device that you are using and provides a little more of the overall characteristics, thereby enabling you to answer possible questions arising from the field.

REMOVE AND REPLACE (Parts)            (Body)	TIME
14. Left Side Panel	
A. Ramada	160 min.
B. Mesa III	160 min.
C. Mesa I & II and Buffalo II	130 min.
D. Eagle	140 min.
E. Falcon	105 min.
F. Scout	100 min.
15. Right Rear Side Panel	
A. Ramada	145 min.
B. Mesa II, III and Buffalo II	125 min.
C. Mesa I	105 min.
16. Right Front Side Panel	
A. Ramada	110 min.
B. Mesa III	110 min.
C. Mesa I, II and Buffalo II	80 min.
17. Tail Light Bezel Panel (B-M-R)	40 min.
18. Front Quarter Panel	
A. Eagle	85 min.
B. Falcon	65 min.
19. Rear Quarter Panel	
A. Eagle	85 min.
B. Falcon	65 min.
20. Axle	
A. Buffalo-Mesa-Ramada	60 min.
B. Eagle-Falcon- Scout	30 min.
21. Spring (E-P-S)	30 min.
22. Shackle Mount (E-F-S)	15 min.
23. Hub (All models)	15 min.
24. Body Leveling Legs (All models)	15 min.
25. Reinforcing Angle (E-F-S)	30 min.

REMOVE AND REPLACE (Parts)            (Body)	TIME
26. Coupler	
A. Eagle-Falcon-Scout	10 min.
B. Buffalo-Mesa-Ramada	20 min.
27. Coupler Latch Kit (All models)	10 min.
28. Wiring Harness (E-F-S)	10 min.
29. Wiring Harness (frame) (B-M-R)	15 min.
30. Wiring Harness (Bezzel Panel) (B-M-R)	30 min.
31. Bed Assembly (E-F)	20 min.
32. Bed Bow (E-F)	15 min.

## HOW TO ADJUST BODY LEVELING LEG PINS

Page 6



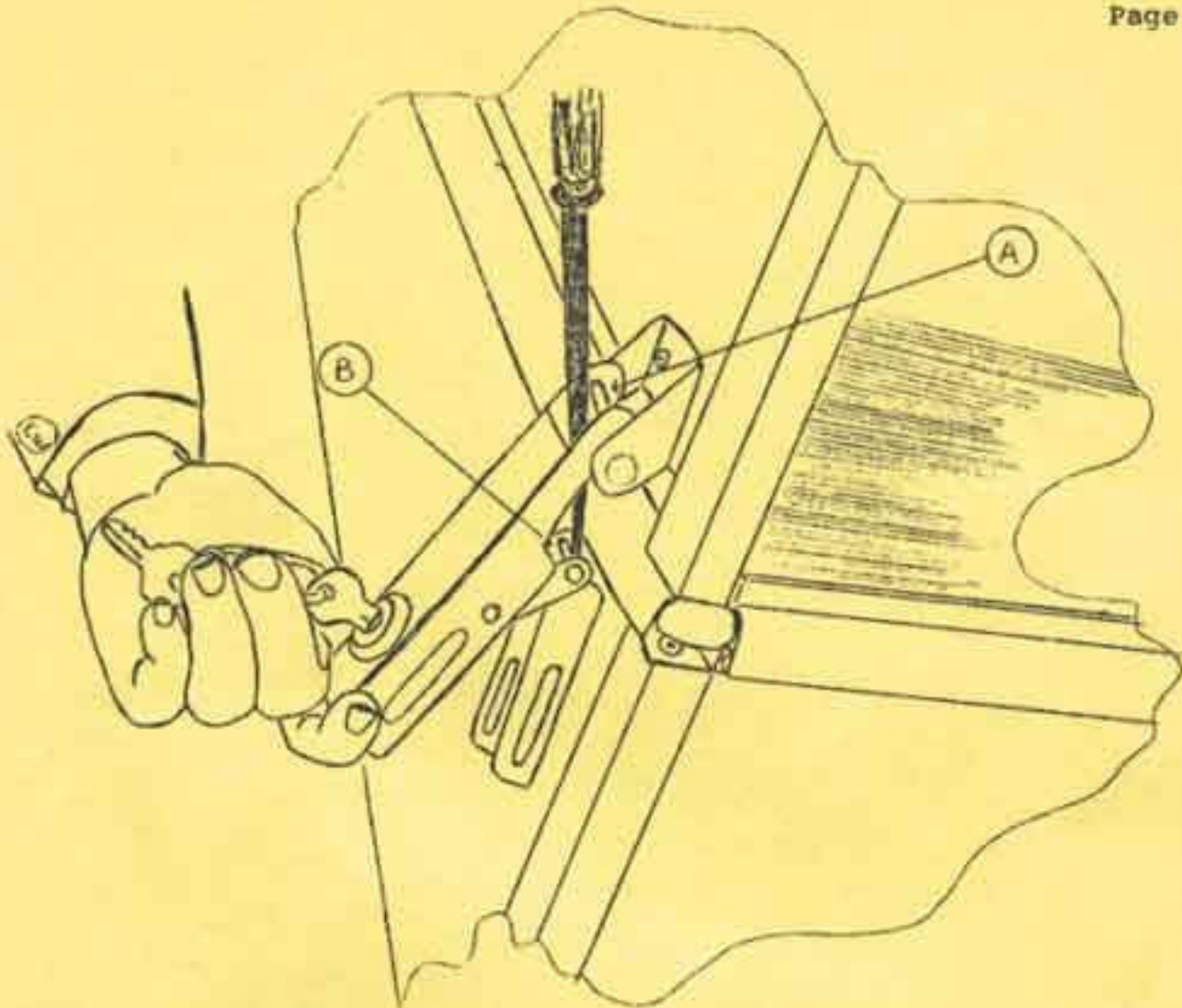
**Problem:** If the leveling leg lock pin (Point A) will not line up with the hole in the leveling leg lock plate (Point B).

**Remedy:** Using a hammer, hit the leveling leg lock plate at Point C with a sound blow to align hole. If after hitting the leveling leg lock plate once or twice the hole does not line up, it then will be necessary to ream the hole (Point B) with a 3/8" drill bit, or a rat tail file. File or ream only in the direction that the pin misses the hole. C



## HOW TO ADJUST MESA &amp; RAMADA ROAD COVER LOCKS

Page 7



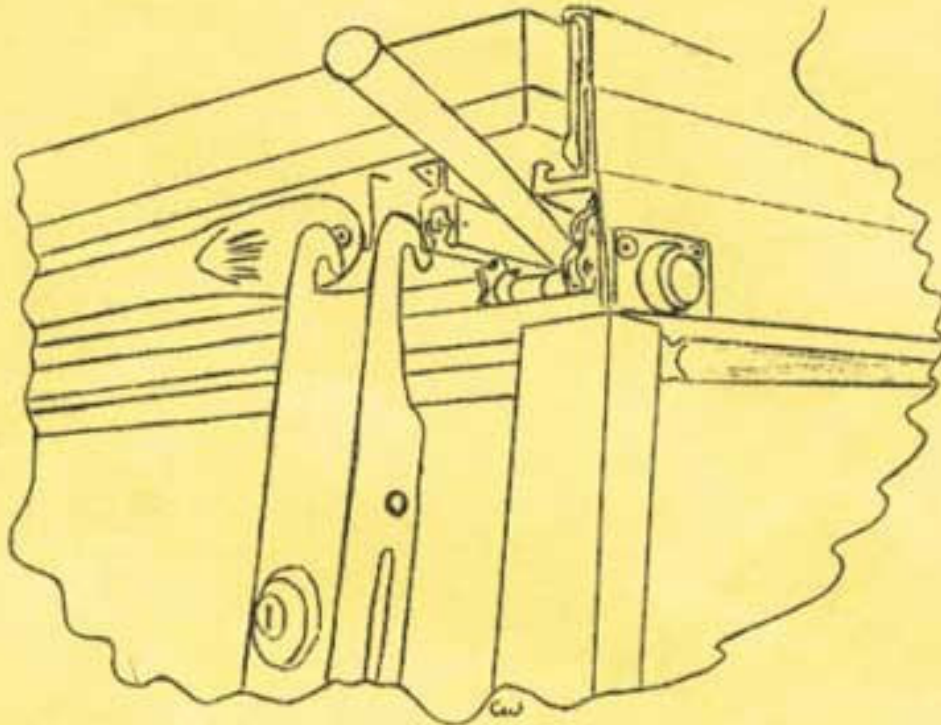
If you are unable to lock a road cover lock because the tumbler will not line up with the holes in the lock body.

ADJUSTMENT PROCEDURE

1. Insert a large screw driver between the pin of the road cover lock striker bracket (Point A) and the pin of the road cover lock on the trailer body. (Point B)
2. Push in on the handle of the screw driver until the holes in the lock body line up, and the tumbler is free to be turned by the key. This adjustment should only need to be made once to each lock. It is advised that a drop of oil be placed into the lock itself, when needed, to keep it working freely.

## BED TIMING PROCEDURE

Page 8

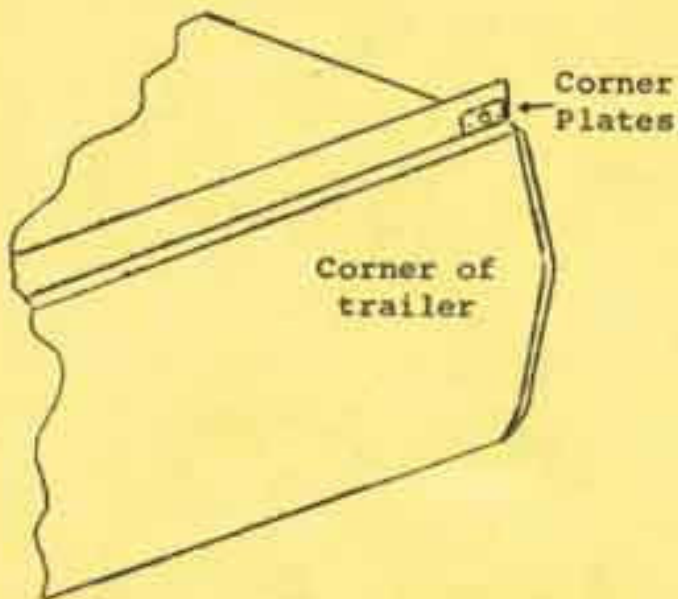


## TO RETIME MESA AND RAMADA BEDS THAT ARE OUT OF TIME:

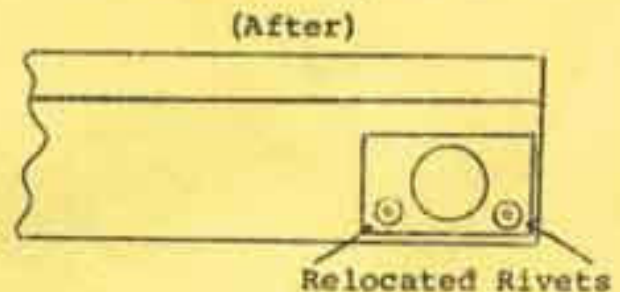
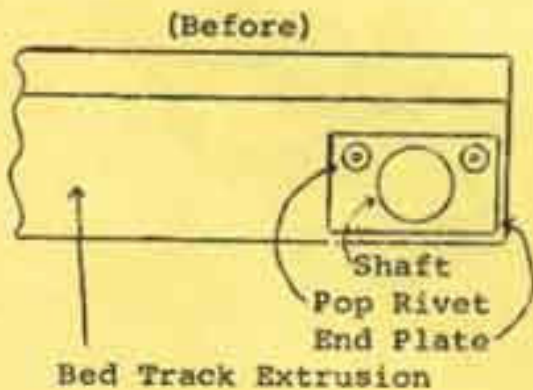
Insert crank handle between the sprocket shaft and the bed. Using the crank as a pry, lift the bed up, jumping it over the sprocket, back into the trailer, until the bed is square, or back in time. It should be noted at this point, if unit jumps back out of time, an adjustment must be made to the corner shaft support plates. See "Suggestion to Remedy Chain Drive Slippage and How to Prevent Beds from Jumping Time," on page 9.

This should apply to all '67, '68, and '69 Mesas and Ramadas.

SUGGESTION TO REMEDY LOOSE DRIVE CHAIN  
OR HOW TO PREVENT BEDS FROM JUMPING TIME



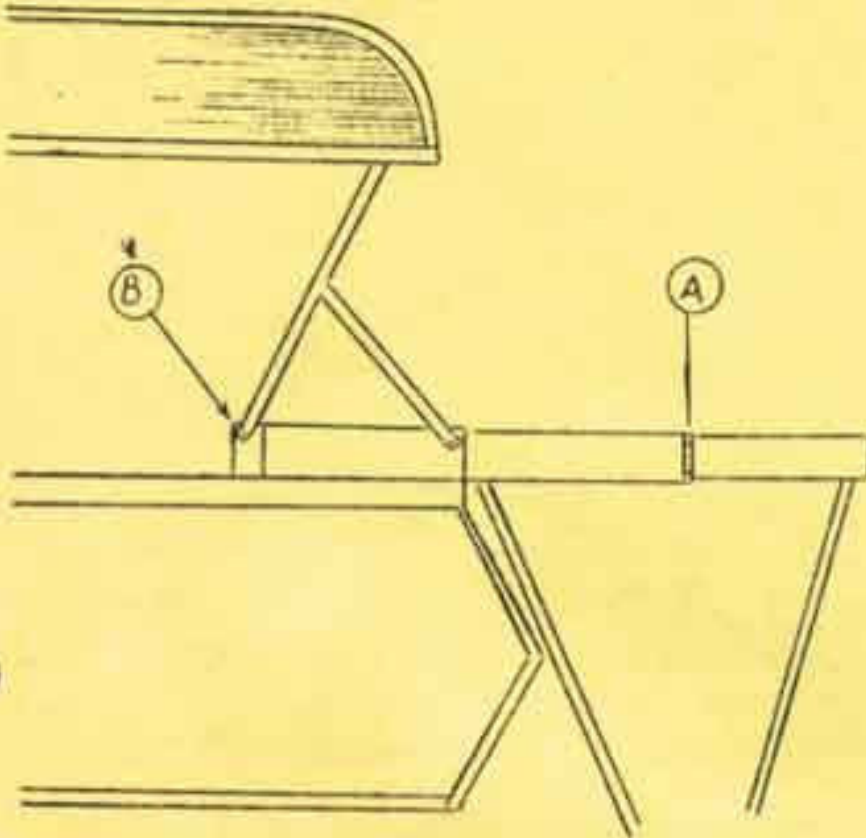
1. Drill out the two pop rivets in the top of the corner plate.
2. Remove plate, turn upside down so that the two pop rivet holes are now at the bottom.
3. Insert crank into the actuator shaft, lift it up and out toward the end of the trailer, while you hold it. Using the two rivet holes as a guide, re-drill and install new pop rivets in the bottom of the plate.



This will lift the shaft driving the sprocket deeper into the chain under the bed. If necessary move the plates on the opposite end of the trailer.

1968 RAMADA  
 PLASTIC BED SLIDE REPLACEMENT PROCEDURE  
 (Using the New Nylon Bed Slide)

For use when no help is available. When help is available, use page 11.



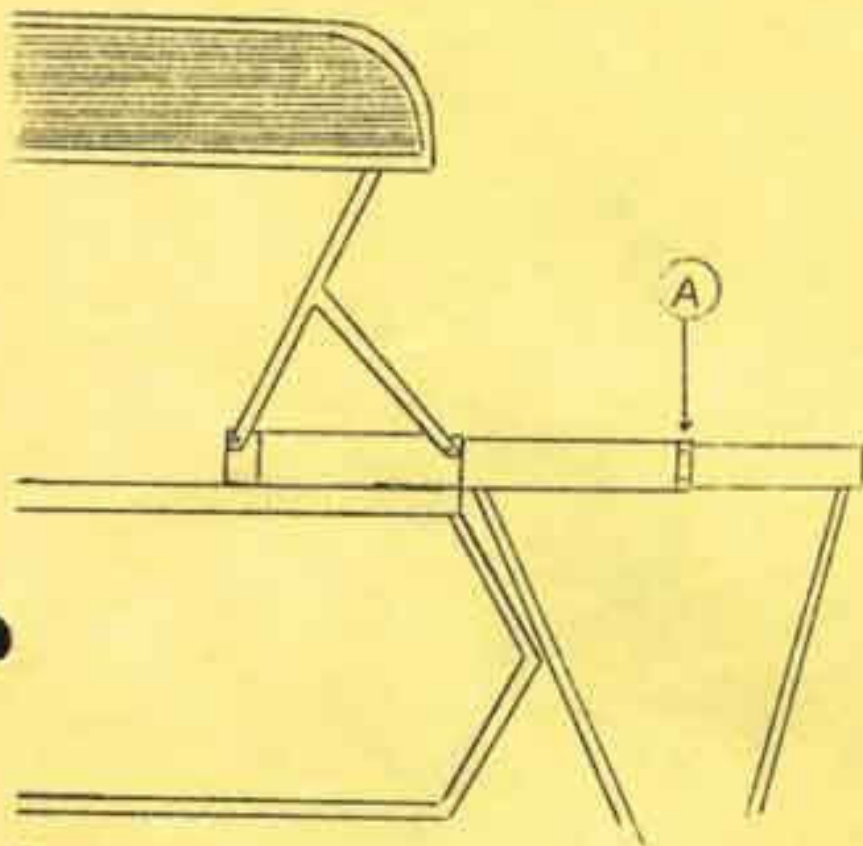
Note: With this new nylon bed slide all of the existing bed slides must be changed, even if only one is broken.

1. Open the unit and drop both bed legs.
2. Drill out the two pop rivets holding the bed stop. (Point A)
3. Using a  $\frac{1}{4}$ " drill bit, drill out the  $\frac{1}{4}$ " rivet holding the road cover support bow to the galvanized bed slide. (Point B)
4. Push this galvanized bed slide back into the body of the trailer exposing both of the plastic bed slides on this side of the bed.

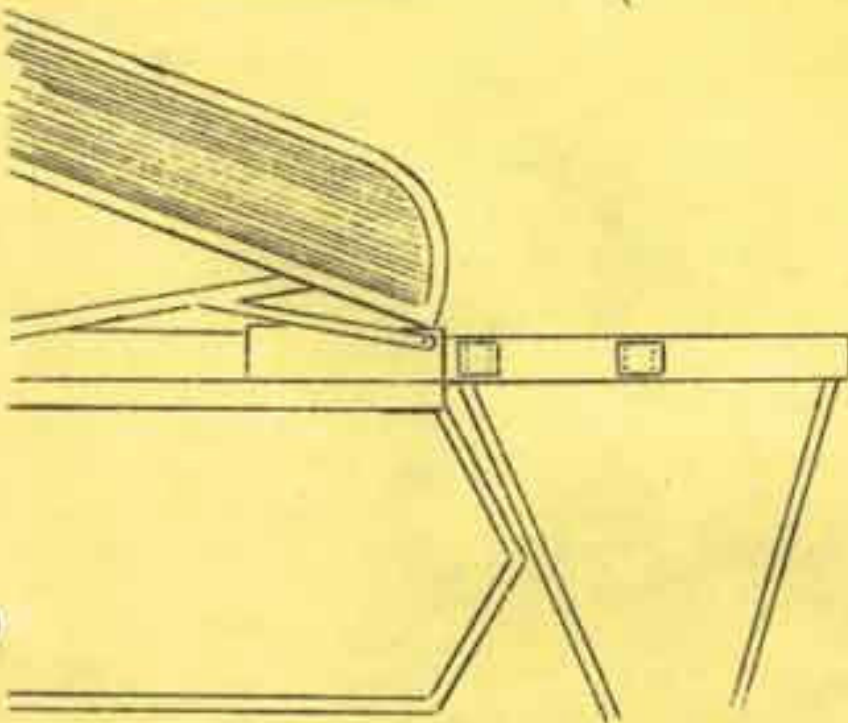
5. Replace both plastic bed slides with the all new nylon bed slide.
6. Slide galvanized bed slide back over the new nylon bed slides. Replace bed stop with two #64 pop rivets. (Point A) Replace  $\frac{1}{4}$ " rivet. (Point B)
7. Go on to change all of the existing plastic bed slides with nylon.

Note: All 8 of the plastic bed slides must be changed because of the different mold that has been used for this new nylon bed slide.

1968 Ramada  
**PLASTIC BED SLIDE REPLACEMENT PROCEDURE**  
 (This procedure will expose all  
 four bed slides on one end of the trailer)



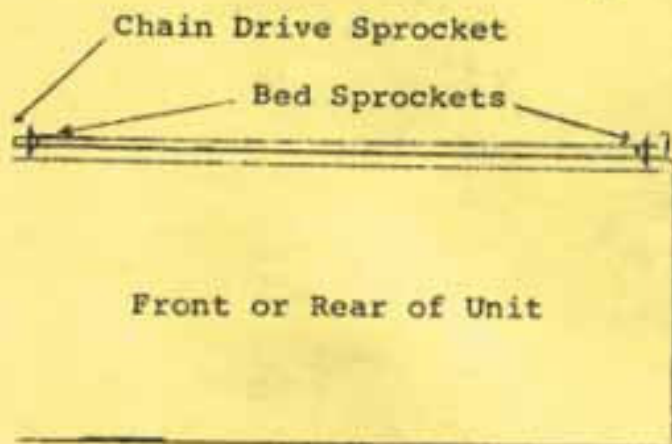
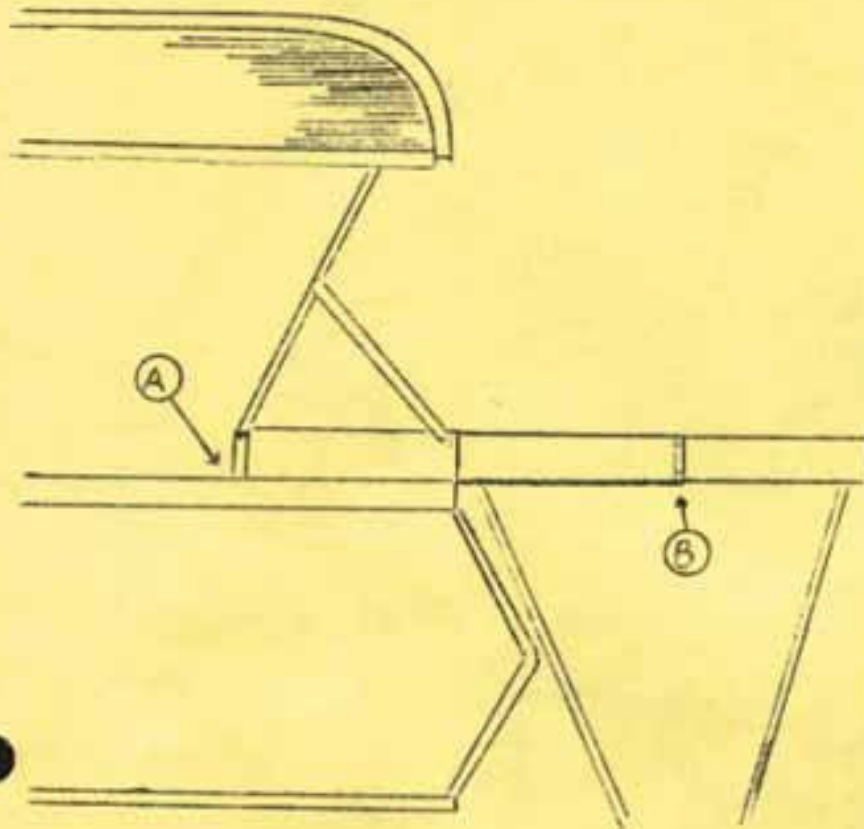
1. Open the unit and drop both bed legs on each bed. (See top drawing)
2. With help to support the road cover, drill out the two pop rivets holding the bed stops at each side of the bed. (Point A) Do both sides of one end or one bed only. Lower the end of the road cover onto the trailer body, (see bottom drawing) exposing the four (4) bed slides on one bed for replacement.
3. Lift the road cover up and slide both galvanized bed slides over the new nylon bed slides, re-install bed stops, (Point A) and go on to other end.



4. Be sure the side walls of the trailer are parallel. To check this with the trailer open, measure between the aluminum bed tracks in 3 different places.

If the walls are not parallel, remove the screws attaching the cabinets to the floor and move the cabinets until the side walls are evenly spaced.

## SPROCKET REPAIR

Procedure

1. Get the unit in the up position.
  - a. By cranking
  - b. By pulling pins
2. Attach a "C" clamp or vise grips at points "A" on each bed track so the top will not come down.
3. Drill out the two pop rivets holding the bed stops, remove bed stops. (Point B)
4. Drill out pop rivets holding vinyl bed seal extrusion and remove extrusion. ('68, '69 only)
5. Remove the bed, or move out enough to work between the bed and unit with bed legs down.
6. Remove the sprocket pins.
7. Drive the actuator shaft to the chain side enough to remove the damaged sprockets and replace with new sprockets.
8. Insert the actuator shaft back into position.
9. Reverse procedure 5, 4, 3, 2, 1.

Note: These instructions cover the bed sprockets only. Because of the sprocket application, the chain drive sprocket seldom requires changing. This repair is fairly common on 1967 Ramadas and Mesas, but a new sprocket design in 1968 virtually eliminated any further sprocket problems.

Should it be necessary to replace the drive sprockets, locate the "repair link" in the chain and take the chain apart. This will release the drive sprockets for replacement. Additional 30 min.



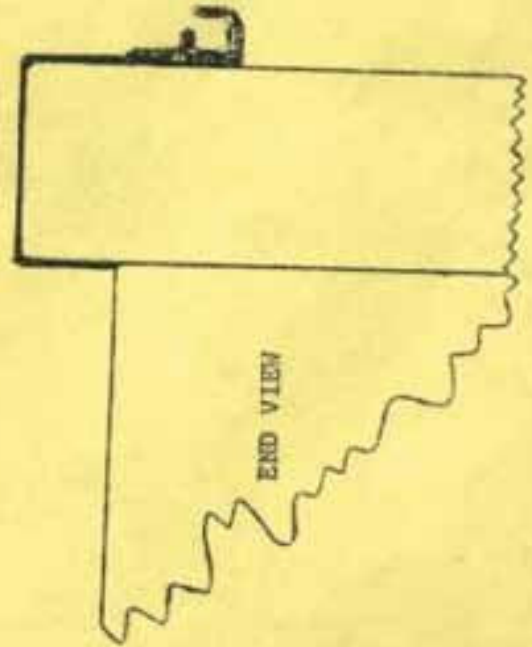
HESA ROAD COVER WITH CANOPY EXTRUSION ATTACHED



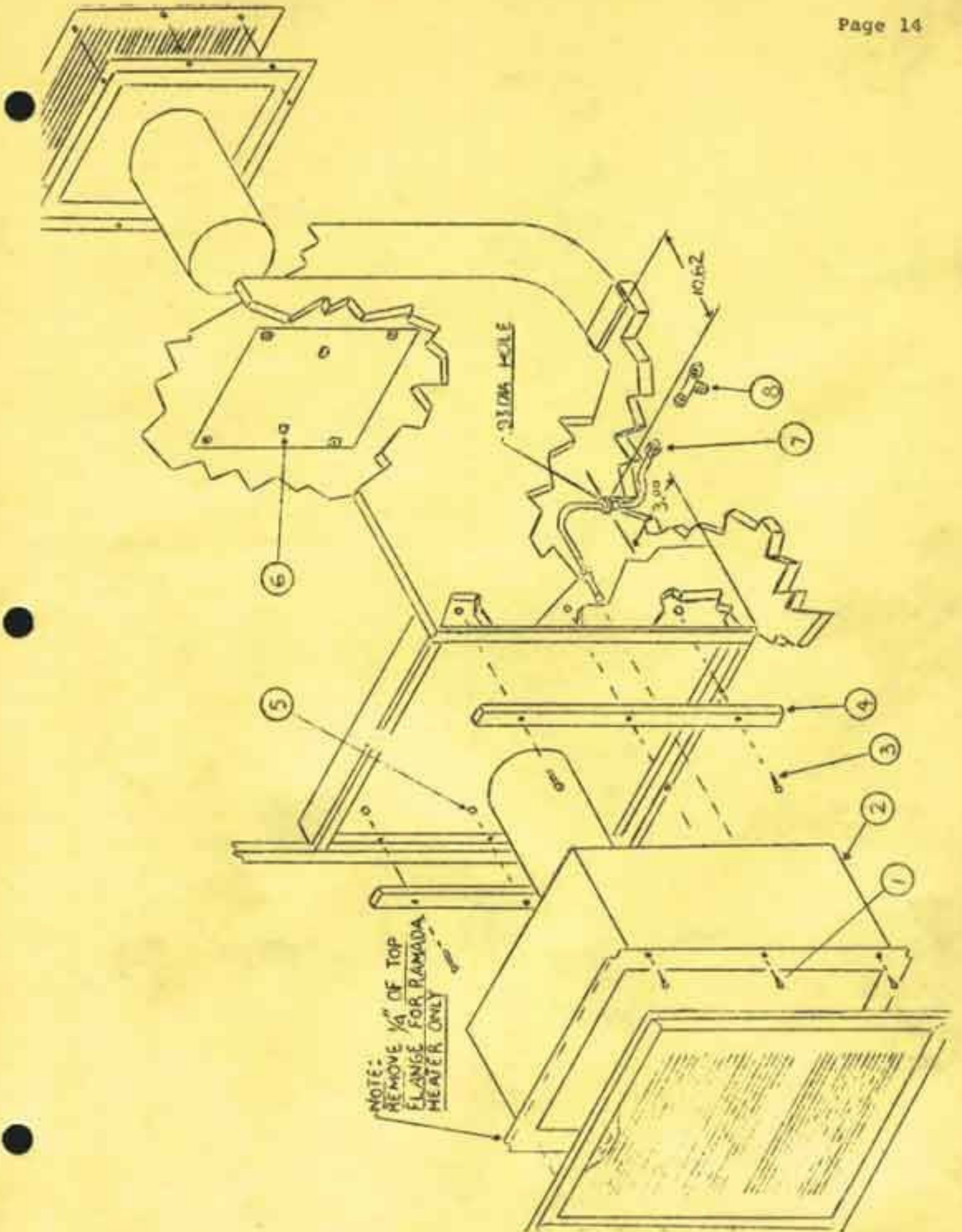
RAMADA ROAD COVER WITH CANOPY EXTRUSION ATTACHED

Install canopy extrusion on the side panel,  
just below the outer lock channel on the  
Hesa and Ramada road cover.

Canopy Extrusion and Pop Rivets included  
in the Pole Packs.



END VIEW





1969 MESA-RAMADA HEATER INSTALLATION INSTRUCTIONS(Read Carefully Before Starting Installation)

- (A) Remove cabinet door.
- (B) Remove exterior vent box grill and plate, discard the plate.
- (C) Drill one (1) 15/16" diameter hole as shown in plywood floor.
- (D) Attach plywood heater mounts (detail #4) in place using six (6) bolts (detail #3) and six (6) nuts (detail #5).
- (E) Install brass "T" (detail #8) connect both copper tubing assembly (detail #7) and entrance copper tubing (main line) beneath trailer floor.
- (F) Insert heater in place and attach heater to plywood mounts using six (6) 3/4" screws provided (detail #1).
- (G) Connect copper tubing assembly to heater.
- (H) Attach front trim panel (grill) to front of heater, hanging it on the flange across the top of heater casing. Install screw at bottom center of grill securing same to the heater.
- (I) Secure thermal bulb to floor as close as possible to trailer outside body panel, using clip and screw provided.
- (J) Insert the larger vent through the outside of the body panel into the heater making sure "TOP" is positioned correctly.
- (K) Insert smaller vent tube and align properly.
- (L) Take the six (6) U-Type nuts and snap them over the holes in the outside body panel.
- (M) Install the outside vent box grill and screw in place using six (6) Phillips head screws provided.

NOTE:

When installing heater in Ramada units only take note that you have to remove 1/4" from top of heater casing. Tin snips seem to work the best.

CAUTION:

Be sure entire gas line system is tight and free from leaks. DO NOT ignite until this precaution is taken.

### Parts Layout

**FURNACE COMPONENTS**

1. Exterior Grille
2. Vent Cap Recessed Fan
3. Vent Pipe Assembly
4. Combustion Air Tube
5. Furnace Casing
6. Wall Mounting Bracket
7. Wall Panel
8. Access Door
9. Spacer

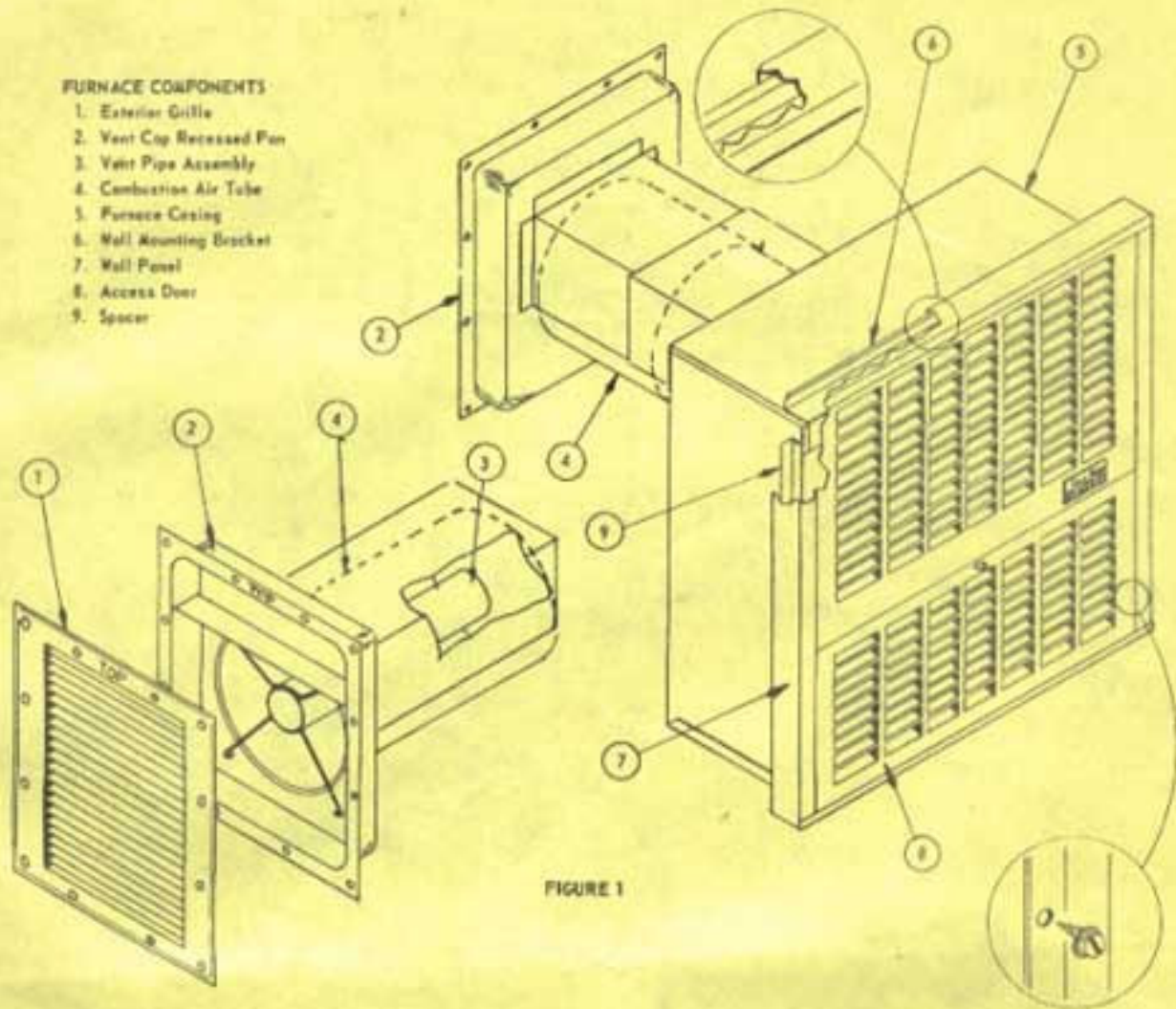
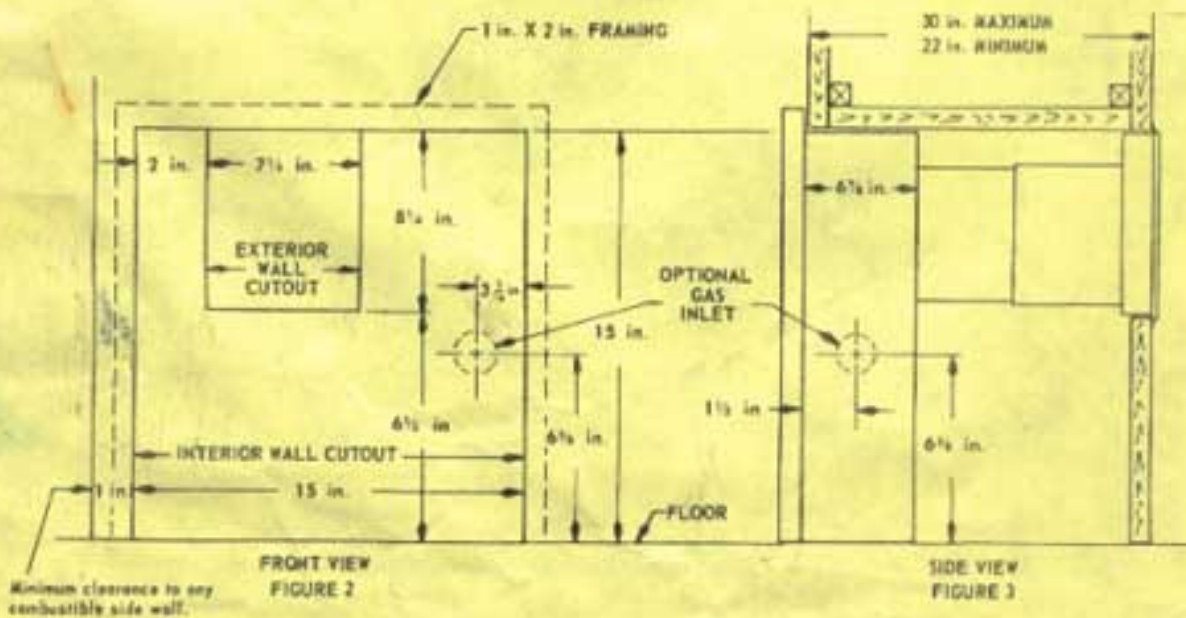


FIGURE 1

### Installation Details



NOTE - All recessed portions or spacers may come in contact with combustible material.

# INSTALLATION INSTRUCTIONS

## NOS. 11H, 11HU, AND 11HBX DUO-THERM GLEN-AIRE GRAVITY SEALED COMBUSTION SYSTEM WALL FURNACES FOR INSTALLATION IN MOBILE HOMES OR TRAVEL TRAILERS

THE NOS. 11H, 11HU, AND 11HBX DUO-THERM GLEN-AIRE GRAVITY SEALED COMBUSTION SYSTEM WALL FURNACES ARE CERTIFIED BY THE AMERICAN GAS ASSOCIATION FOR INSTALLATION IN A MOBILE HOME OR TRAVEL TRAILER FOR USE WITH LIQUEFIED PETROLEUM GASES. THE FURNACE MUST BE INSTALLED IN ACCORDANCE WITH THESE INSTRUCTIONS FOR PROPER PERFORMANCE. THESE FURNACES ARE CERTIFIED WITH A VENT ASSEMBLY THAT IS ADJUSTABLE FROM A MAXIMUM OVERALL WALL THICKNESS OF 30 IN. TO A MINIMUM OVERALL WALL THICKNESS OF 22 IN. NO CUTTING OF THE VENT PIPES IS REQUIRED BEFORE STARTING THE INSTALLATION. CONSULT APPLICABLE STATE AND LOCAL CODES.

### LOCATION

THE FURNACE SHOULD BE LOCATED NEAR THE CENTER OF THE AREA TO BE HEATED. AVOID LOCATIONS WHERE OPENED DOORS WOULD SWING IN FRONT OF THE FURNACE. DETERMINE THE LOCATION AND PROCEED AS OUTLINED BELOW.

### INSTALLATION INSTRUCTIONS

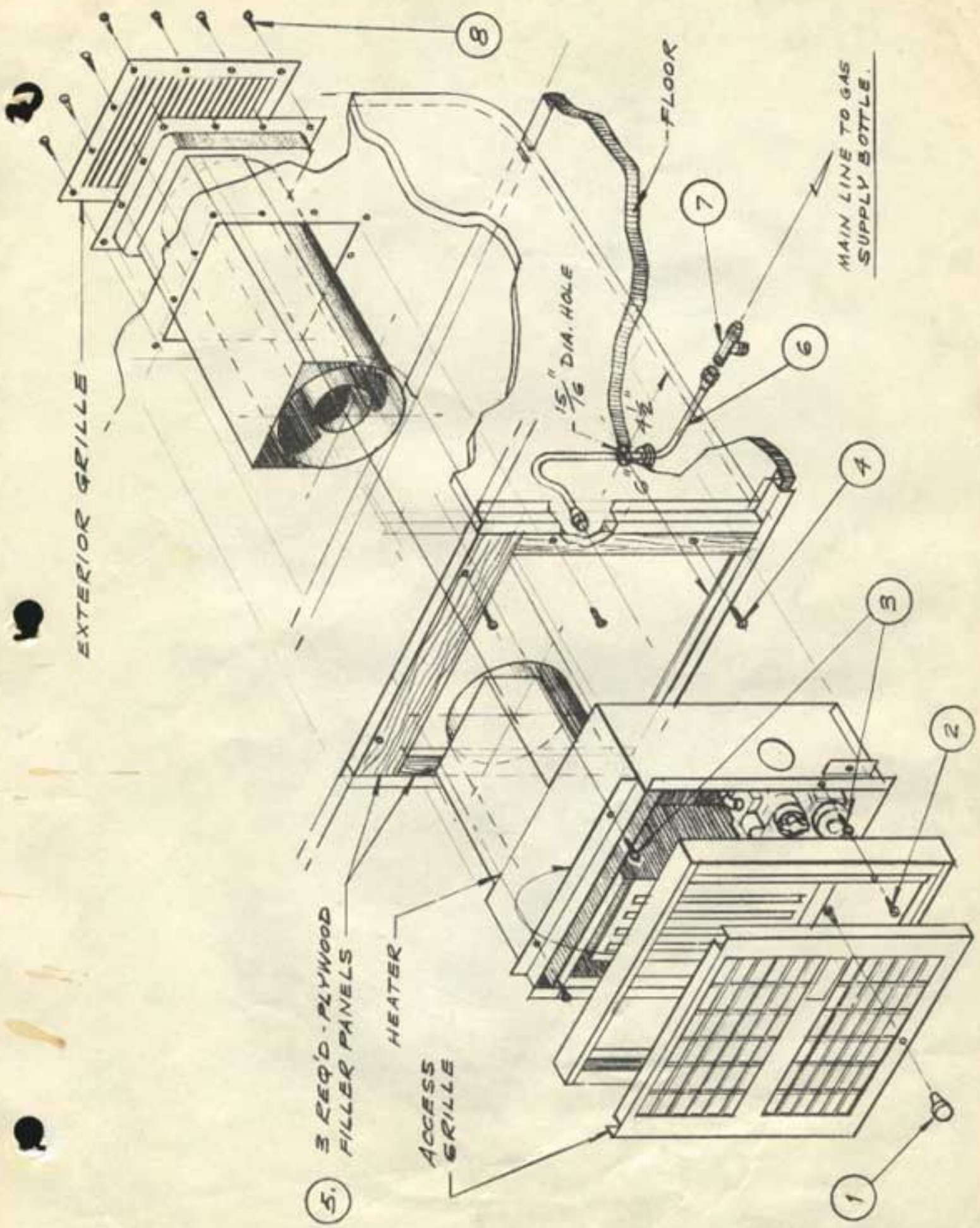
SEE FIGURES 1, 2, AND 3.

1. PROVIDE A 15 INCH HIGH, 15 INCH WIDE AND NOT LESS THAN 6-1/4 INCH DEEP WALL OPENING FOR THE FURNACE CASING. THIS OPENING MUST BE A MINIMUM OF ONE INCH FROM ANY COMBUSTIBLE SIDE WALL.
2. PROVIDE A 8-1/4 INCH HIGH BY 7-1/4 INCH WIDE OPENING IN OUTSIDE WALL FOR THE RECESSED VENT CAP ASSEMBLY AS SHOWN IN FIGURE 2.
3. PROVIDE AN OPENING IN THE BACK OR SIDES OF THE FURNACE ENCLOSURE FOR ROUTING THE GAS SUPPLY LINE. SEE FIGURE 2 AND 3.
4. REMOVE WALL PANEL FROM FURNACE CASING. INSERT FURNACE CASING INTO OPENING PROVIDED IN STEP 1. SECURE FURNACE TO WALL WITH SCREWS THROUGH HOLES PROVIDED IN THE CASING BOTTOM AND THE MOUNTING BRACKET AT THE TOP.
5. PLACE MASTIC AROUND THE OPENING IN THE OUTSIDE WALL. THIS IS THE OPENING PROVIDED FOR THE VENT CAP ASSEMBLY IN STEP 2.
6. INSERT THE RECESSED PAN PORTION OF THE VENT CAP ASSEMBLY THROUGH THE OPENING IN THE OUTSIDE WALL AND SLIDE THE AIR TUBE OF THE RECESSED PAN OVER THE AIR TUBE ON THE BACK OF THE FURNACE CASING.
7. INSERT VENT PIPE ASSEMBLY OVER VENT PIPE ON BACK OF FURNACE. ATTACH VENT PIPE ASSEMBLY TO THE RECESSED PAN WITH THE FOUR SCREWS THAT ARE PROVIDED.
8. ATTACH EXTERIOR GRILLE TO THE WALL WITH SCREWS THROUGH THE HOLES THAT ARE PROVIDED IN THE GRILLE AND RECESSED PAN. OBSERVE MARKING "TOP" ON EXTERIOR GRILLE AND RECESSED PAN. CONNECT THE GAS SUPPLY LINE TO THE GAS CONTROLS. TURN ON THE GAS AND CHECK FOR LEAKS AT ALL JOINTS. USE SOAP AND WATER SOLUTION. DO NOT USE FLAME.
9. REINSTALL THE WALL PANEL TO THE FURNACE CASING.
10. PROVIDE A PROTECTIVE ENCLOSURE AROUND THE COMPLETE FURNACE ASSEMBLY. REFER TO DRAWINGS ON BACK OF THIS SHEET. THIS ENCLOSURE MUST EXTEND FROM THE INTERIOR WALL TO THE EXTERIOR WALL. ALSO, THIS ENCLOSURE MUST EXTEND FROM THE BOTTOM OF THE FURNACE TO THE TOP. THE TOP OF THE ENCLOSURE MUST ALSO BE COVERED. THE WIDTH OF THE ENCLOSURE MUST BE THE SAME AS THE WIDTH OF THE FURNACE CASING. THIS APPLIANCE IS CERTIFIED BY THE AMERICAN GAS ASSOCIATION, SO THAT ALL RECESSED PORTIONS OR SPACERS MAY COME IN CONTACT WITH COMBUSTIBLE MATERIAL.

**IMPORTANT — Keep Control Compartment Clean at All Times**

# DUO-THERM

MOTOR WHEEL CORPORATION • LA GRANGE, INDIANA

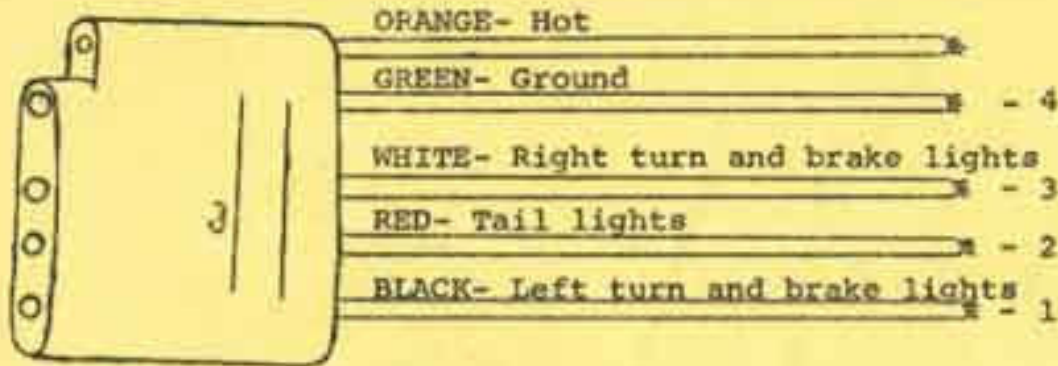


1970 Mesa - Ramada Heater Installation  
Instructions

1. Remove and discard cabinet door.
  2. Remove exterior vent box grille and plate, discard plate.
  3. Drill one (1) 15/16" diameter hole in floor, location shown in perspective sketch.
  4. Attach three (3) plywood filler panels (Detail #5), one across the top and one for each side using six (6) 3/16 x 7/8 Phillips Head Self Drilling Screws (Detail #4) check to see that finished opening is 15 x 15 in size.
  5. Remove and discard brass elbow. Install brass "T" (Detail #7) connecting gas copper tubing provided (Detail #6) with main entrance tubing line beneath trailer floor.
  6. Make two (2) or more 1/2" deep vertical saw cuts in flange of aluminum extrusion at floor level. Hammer flange down and inward until horizontal.
- NOTE: This only necessary for the Mesa III and Ramada II models. For Ramada I, drill out pop rivets in the aluminum extrusion remove and discard same. Replace with the extra plywood filler panel provided. Use small brads and tack it to the floor.
7. Position heater in place and attach heater to plywood filler panels using four (4) #10 x 3/4 Hex Head Screws provided (Detail #3) Do not completely tighten the top screws.
  8. Connect gas copper tubing to heater with male brass elbow provided.
  9. Hang inside vent panel on upper flange of heater, securing the same with two (2) screws provided (Detail #2). Snap access grille in place on vent panel. Attach knob (Detail #1) to bottom of access grille with screw provided. To light pilot, lift and pull out on grille.
  10. Insert vent through outside body panel opening into heater. Important that identification "TOP" is in correct position.
  11. Secure exterior grille in place using twelve (12) #14 x 3/4" Slotted Round Head Screws provided.

**CAUTION:** Be sure entire gas line system is tight and free of leaks. Do not ignite until thorough inspection of all connecting fittings.

## WIRING CODE FOR 5 HOLE FEMALE TRUNK HARNESS FOR CAMPING TRAILERS



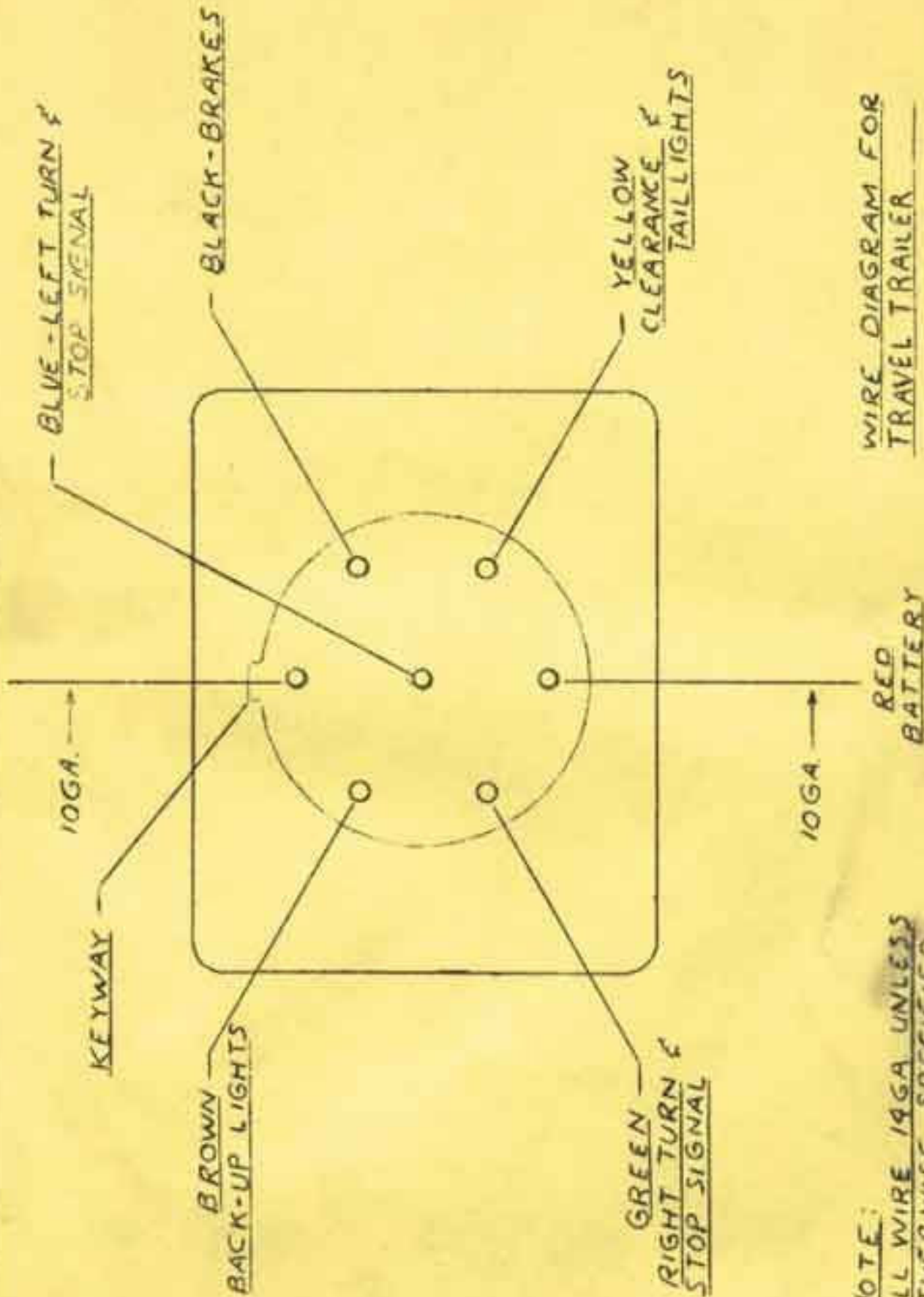
## HOW TO HOOK UP THE 12V HOT WIRE FOR 12V LIGHT

There are two ways this can be done:

1. Some cars have a hot wire to the trunk for use with the trunk light. This wire may be used. All Chevrolets have this wire even if the trunk light is not installed.
2. On cars that you could not find a hot wire in the trunk, the best spot to hook the wire to is at the terminal box under the hood. We would suggest the use of 14 gage wire with an inline fuse. You can find the hot line on the terminal box with a test light. Make sure everything is turned off before you try to locate the hot line.

Use a test light to locate the correct wires on the car or the following system can be used if no test light is available. Hook up wire #4, the ground, by screwing it to any steel in the trunk. Plug the trunk harness portion into the trailer wiring harness. Attach a safety pin to each of the 3 exposed wires. (Numbers 1-2-3 in drawing) Wire #2 leads to the tail lights of your trailer. With the parking lights of your car turned on, insert the safety pin in wire #2 through the insulation of your car wiring until all of your tail lights are working. Turn on the right turn signal and insert the safety pin in wire #3 into the car's wiring until you find the correct wire that will flash your turn signal. Now turn on the left turn signal and insert the safety pin in wire #1 into the car's wiring until you find the correct wire that will flash your left turn signal. Now that you have found all of the necessary wires, strip about  $\frac{1}{4}$ " of the insulation off each wire and connect the wires, then tape each connection.

DEALER SERVICE 1969  
WIRE DIAGRAM #1 TRAVEL TRAILER      WHITE  
COMMON GROUND



NOTE:  
ALL WIRE 19GA UNLESS  
OTHERWISE SPECIFIED

WIRE DIAGRAM FOR  
TRAVEL TRAILER  
CAR HOOK-UP 1969 CW

### INSTRUCTIONS FOR CLEANING TENT BOWS

Prior to attaching any tent, all tent bows should be cleaned to eliminate black marks. This is easily done by rubbing them with a clean cloth.

To shine the bows for show, try steel wool, Brasso, or Boyers Metal Cleaner. The latter two should be applied with a soft cloth and then polished to a high gloss using a dry cloth.

### INSTRUCTIONS FOR ATTACHING TENT TO CHIEF TRAILER

Chief only: Bed rail reinforcement corners are pre-drilled for polyrod. They do not need to be removed when stringing the tent.

Spread tent on trailer with canvas sleeves parallel to ends and left side of trailer. (The left side is opposite the bow pivot plates.)

Attach tent to the long side of the trailer first. Do this by placing canvas sleeves, on edge of tent, into groove located along outside top edge of aluminum bed rail extrusion and then insert polyrod thru the canvas sleeve now inside of groove.

To aid in attaching tent to ends of trailer, first raise bed bow and center bow with tent attached. Insert polyrods as before.

### INSTRUCTIONS FOR ATTACHING TENT TO SCOUT TRAILER

Using set-up instructions, set unit up completely as if tent were attached. (Beds out and all legs down to the ground.)

Determine which is front and rear of the tent. Front has serial number by door and zipper along the eave for canopy attachment.

Place ends of tent over both end bed bows. Now raise center bow and tie tent to all bows with loose webbing provided.



INSTRUCTIONS FOR ATTACHING TENT TO FALCON, EAGLE AND BUFFALO

Using set-up instructions, set unit up completely as if tent were attached. (Beds out and all legs down to the ground.)

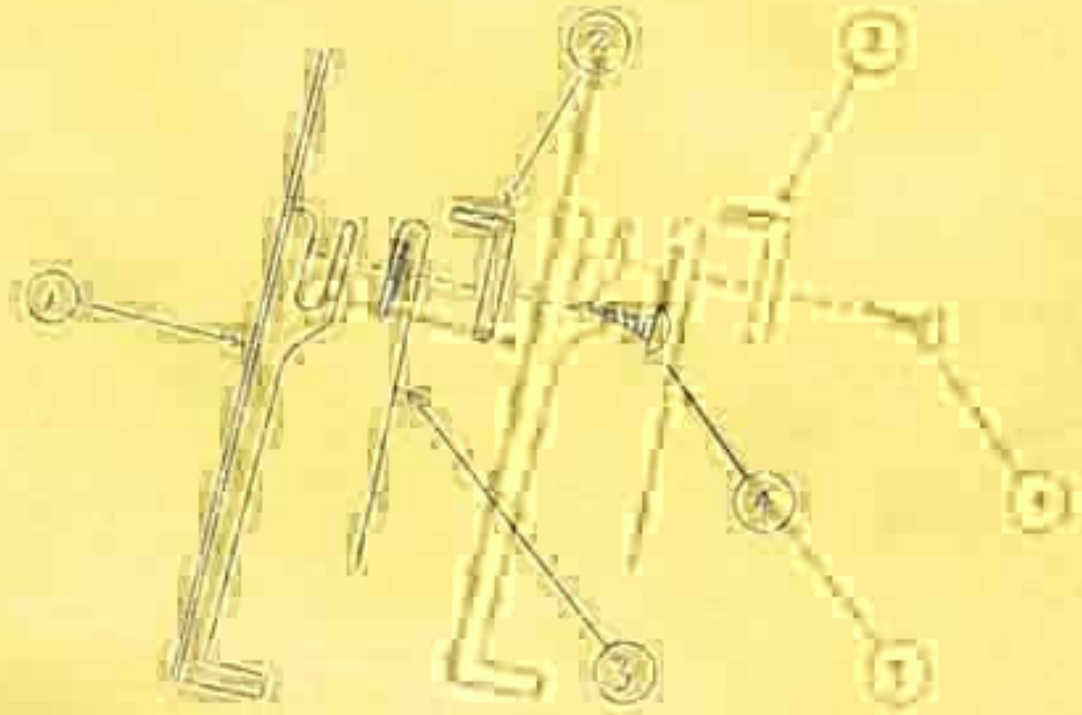
Determine which is front and rear of the tent. Front has serial number by the door and zipper along the eave for canopy attachment.

Place ends of tent over both end bed bows. Raise center bow and both hip bows and tie tent to these bows with loose 3/4" webbing provided.

Inside all four corners of the tent you'll find a strip of 1 1/2" webbing sewn. Also you will notice a total of four washers and metal screws attached near the corners of the steel bed frame. By punching a hole into the webbing these screws and washers can be used to attach the webbing to the beds. TWO CAUTIONS: 1. Webbing should be kept outside the bows. 2. The webbing should not be pulled tight when attached. Punch the locating hole about 2 inches from the end of the webbing and fasten to the bed with the screws and washers.

NOTE: Buffalo does not use the four (4) 1 1/2" webb straps.

INSTRUCTIONS FOR ATTACHING TENT TO ENDS OF MESA  
or  
RAMADA TRAVEL COVER



1. Travel cover end extrusion and attachment
2. Tent retainer extrusion
3. Tent
4. No. 10-16 x 5 Phillips pan head screw

Remove screws (#4) and tent retainer extrusions (#2) at end of travel cover. Fold edge over (#3) and insert into travel cover end extrusion (#1). Center the tent in the extrusion. Replace the tent retainers, tent retainer extrusion and screws.

PAYNT COLORS

(Use enamel rather than lacquer)

1967 Eagle

Mist Blue----- 65 Chevrolet  
 Asto Blue----- 65 Buick  
 Blue Snure----- 65 Oldsmobile

1967 Mesa

Willow Green----- 65 Chevrolet  
 Sea Foam----- Buick  
 Soure Mist----- Oldsmobile  
 Palaminto----- Pontiac

1967 Ramada

Sundust Beige----- 66 Thunderbird

1967 Falcon

Prairie Bronze----- 65 Ford

1968 Eagle-Falcon

Lime Gold----- 67 Ford (Mustang)

1968 Ramada-Mesa

Moss Green----- 67 Ford  
 Caballero Tan----- 66 Rambler

1969 Eagle-Falcon

Twilight Turquoise----- 65 Ford  
Whitecap (Off white)----- 63-65 Kaiser Jeep

1969 Buffalo, Mesa, and Ramada

Burnished Saddle----- 68 Buick  
Alabaster----- 62 Chrysler

1969 Scout

Whitecap (Off white)----- 63-65 Kaiser Jeep  
Twilight Turquoise----- 65 Ford

CHIEF - Manufacturers Option

VESELY COMPANY TOOLS

1 - 56-00-784	Hand Pop Gun Kit	Dealer Cost	\$27.00
1 - 56-00-797	Snap Dies	" "	6.50
1 - 56-00-803	Leak Tec (Gas Leak Detector)	" "	2.50
1 - 56-00-777	Canvas Patching Glue	" "	1.00

Also see suggested tools on page 24.

RECOMMENDED DEALER TOOL LIST

## 1 - Socket Set, contents listed:

(Sockets)		Handles and Parts
5/16"	9/32"	1 - Speed Wrench
1/4"	5/8"	1 - Reversible Ratchet
3/8"	11/16"	2 - Extensions
7/16"	3/4"	1 - Universal Joint
1/2"	7/8"	
9/16"	1"	

1 - Channellock's (Pump Pliers)

1 - Combination Slip-joint Pliers

2 - Vise Grip Pliers - Standard Straight Jaw

1 - Crescent Wrench - 12"

1 - Set of Open End - Box End Wrenches

3/8"	5/8"
7/16"	11/16"
1/2"	3/4"
9/16"	7/8"
19/32"	1"

1 - Ball Pein Hammer

1 - 1/2" Cold Chisel

1 - 5/8" Point Center Punch

1 - 4" Regular Screwdriver - Tip Width 1/4"

1 - 6" Regular Screwdriver - Tip Width 3/8"

1 - 4" Phillips Screwdriver - Point Size #2

1 - 6" Phillips Screwdriver - Point Size #3

1 - Reversible Electric Drill 3/8" (Second choice 1/4" Standard 2.5 Amp minimum)

1 - Hack Saw

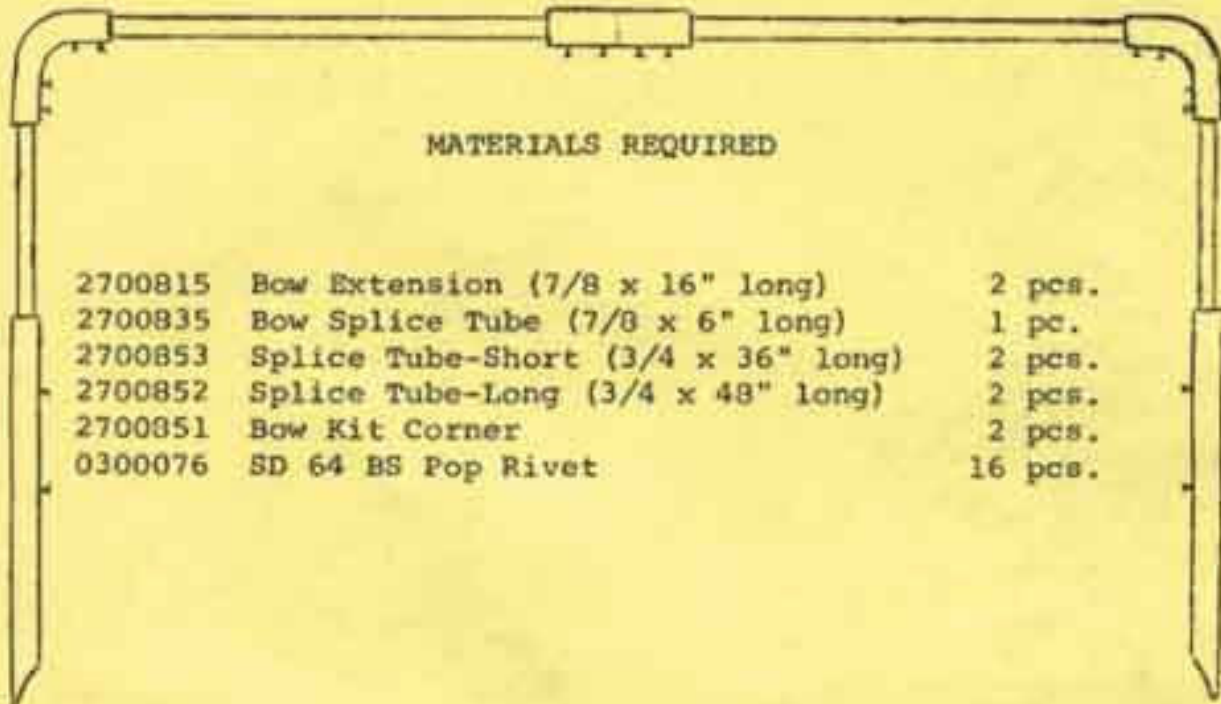
1 - Fine File

1 - 12 Volt Test Light

1 - Rubber Mallet

ALL MODEL REPLACEMENT BOW AND/OR REPAIR KIT  
(Vesely Part No. 5600829)

Page 25



This Bow Kit was designed to save our dealers the sometimes very exorbitant freight charges involved in the shipping of a replacement bow. This kit will satisfy practically all requests for current and non-current APACHE trailers. We will still continue to carry in our present inventory a quantity of current bows. However, on any order for obsolete bows, no longer carried in stock, we will automatically ship this kit.

Per the above sketch the assembly of this kit is self-explanatory. You will have to know the dimensions of the bow that you are going to replace, cut the splice tubes, drill a few holes, and pop rivet the corresponding parts.

Every dealer should have at least two (2) of these bow kits on hand at all times. They are available at \$4.50 each. (Vesely Part No. 56-00-829.)

PARTS KIT

(56-00-860)

<u>QTY.</u>	<u>PART NO.</u>	<u>DESCRIPTION</u>	<u>UNIT PRICE</u>	<u>EXTENDED AMOUNT</u>
12	3700725	65-69 Large Lens	1.50	18.00
6	3700748	59-64 Small Lens	1.30	7.80
12	4816030	59-69 Bearings	1.30	15.60
12	4816100	59-69 Races	1.30	15.60
6	4816099	59-69 Grease Seals	.60	3.60
12	3700086	Female Trunk Harness(68 & Older)	.50	5.00
6	3700747	Male Trunk Harness (68 & Older)	.50	3.00
6	3700813	69 Male Trunk Harness	.65	3.90
12	3700754	69 Female Trunk Harness	.65	7.80
1	4816019	59-69 Std. Hub Ass'y	7.50	7.50
6	1700860	67-69 Sprocket	2.00	12.00
2	1800026	67 M-R Bed Crank Ass'y	2.50	5.00
2	0200986	69 M-R Bed Crank Ass'y	2.50	5.00
2	1800033	69 M-R Bed Crank Lug	1.10	2.20
3	5600775	3/M Sealer	2.25	6.75
3	5424548	Sail Craft Spray	1.50	4.50
6	2700815	62-69 F-E Bed Bow Ext.	1.00	6.00
6	4116035	Rubber Shackle Bushing	.30	1.80
3	0200031	R.H. Stay Brace (All Models)	.80	2.40
3	0200034	L.H. Stay Brace (All Models)	.80	2.40
1	5416801	Blue Spray Paint	1.75	1.75
1	5416806	Bronze Spray Paint	1.75	1.75
1	5416808	Beige Spray Paint	1.75	1.75
1	5416809	Willow Green Spray Paint	1.75	1.75
1	5416811	Moss Green Spray Paint	1.75	1.75
1	5416810	Lime Gold Spray Paint	1.75	1.75
2	5416819	69 Twilight Turquoise Paint	1.75	3.50
2	5416820	69 White Cap Spray Paint	1.75	3.50
2	5416821	69 Alabaster Spray Paint	1.75	3.50
2	5416818	69 Burnished Saddle Spray Paint	1.75	3.50
1	5600829	69 Bow Kit Ass'y	4.50	4.50
8	4200860	Nylon Bed Slide	.40	<u>3.20</u>
			TOTAL	\$169.05

DEALERSHIP: \_\_\_\_\_

ADDRESS: \_\_\_\_\_

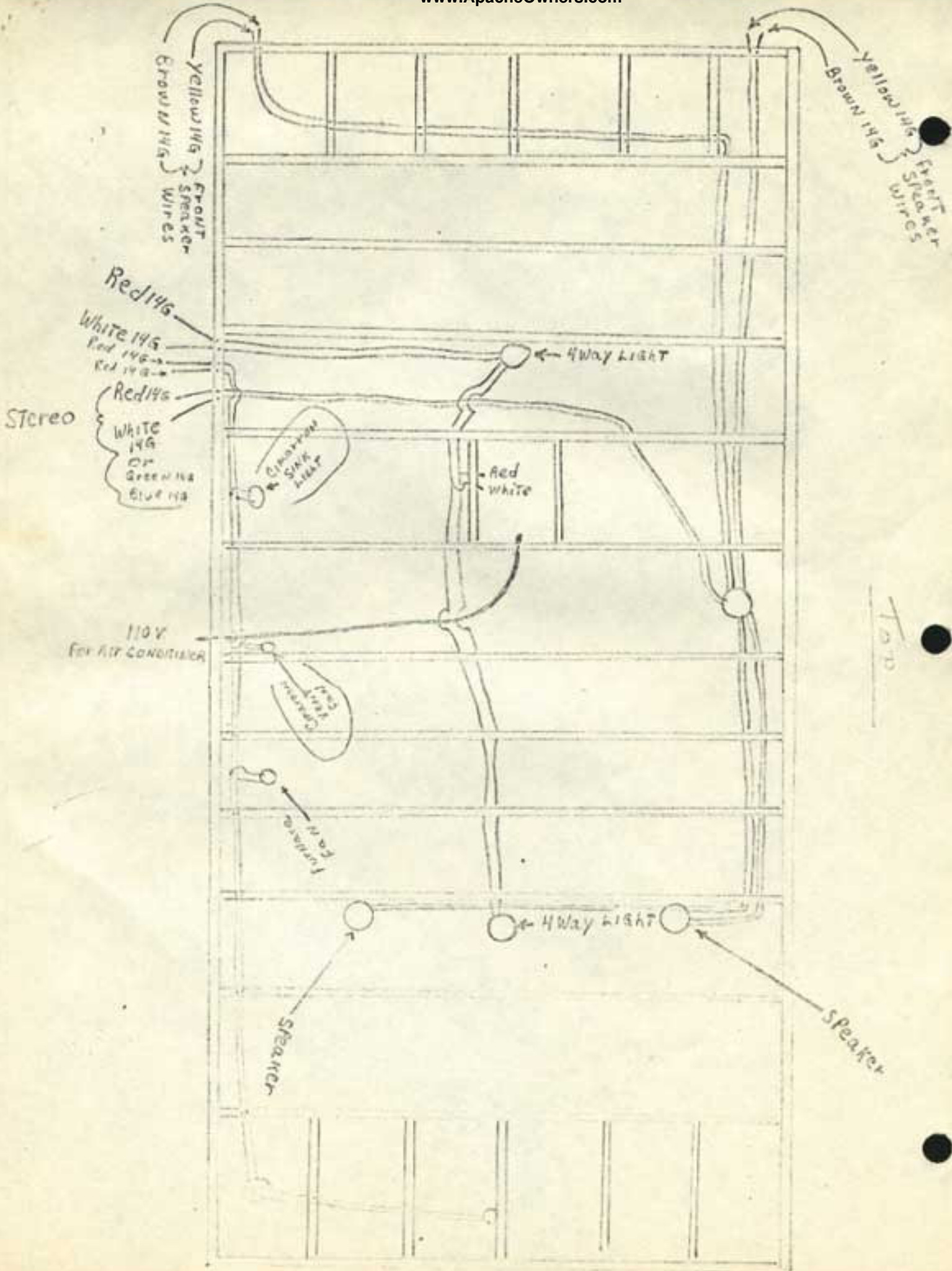
CITY: \_\_\_\_\_ STATE: \_\_\_\_\_ ZIP CODE: \_\_\_\_\_



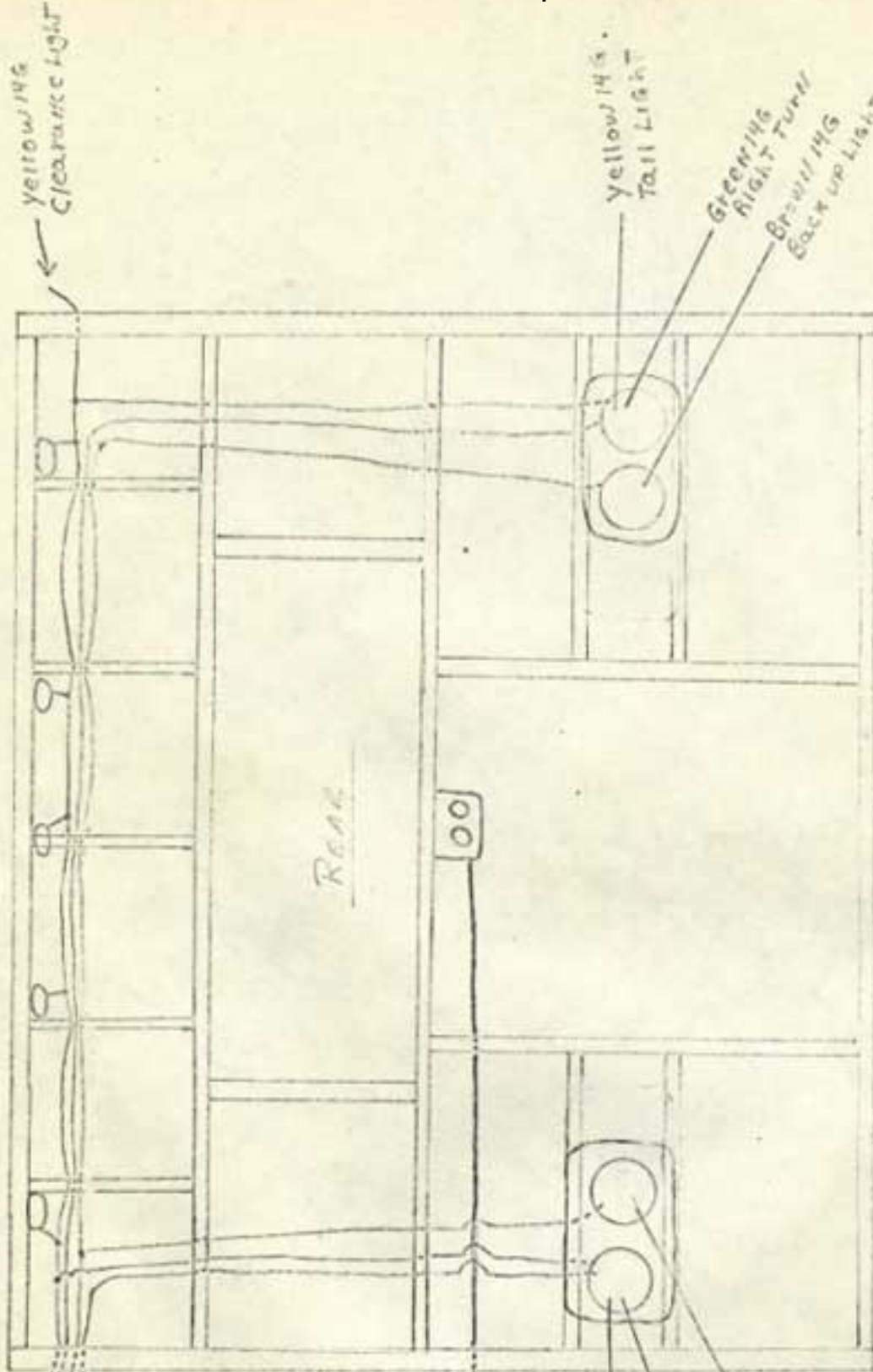
DEALER REPAIR PARTS KIT  
(Vesely Part No. 5600796)  
1966 PARTS KIT

This Parts Kit includes a general assortment of the various types of fasteners, manufactured parts, undercarriage parts, electrical parts, etc; used in the production of current and past model APACHE trailers. All items are packaged individually and identified to enable you on selecting the correct part. This is being offered to you in this kit form at a 50% discount. Total dealer cost is \$36.00, F.O.B. Lapeer, Mich.

<u>PART NO.</u>	<u>DESCRIPTION</u>	<u>QTY.</u>
3390003	3/4" Webbing	10 yds.
0716095	Lug Bolts	4
4816030	Bearings	2
0816106	Cotter Keys	12
0716036	1/2-20 Lug Nut	4
0716037	1/2-20 x 3 1/4" Shackle Bolt	4
0716014	3/8-16 x 3 Regular Hexagon Bolt	6
0716015	3/8-16 Finished Pull Hug Nut	6
0700752	Tail-Lite Hex Head Bolt	6
0600006	3/16 x 5/16 Semi-Tube Rivet	36
0600032	3/16 x 1/2 Semi-Tube Rivet	24
1700767	Apron Buttons	4
5240358	Door Lock Spring	10
5200137	Leg Adjusting Lock Spring	12
3600007	3/16 x 1 1/8 Rivet	12
5200138	Leg Retainer Spring	4
3600021	1/4 x 17/32 Semi-Tube Rivet	20
3300077	66 Aluminum Pop Rivet	40
3300156	62 Aluminum Pop Rivet	40
3300155	610 Aluminum Pop Rivet	40
3300158	68 Aluminum Pop Rivet	40
3300076	64 Aluminum Pop Rivet	40
3600221	3/16 x 3/8 Semi-Tube Rivet	25
3600321	3/16 x 1 Semi-Tube Steel Rivet	12
3600265	1/4 x 11/32 Semi-Tube Steel Rivet	24
3600046	3/16 x 7/16 Semi-Tube Steel Rivet	30
3600239	1/4 x 9/32 Semi-Tube Rivet	30
3600224	1/4 x 5/8 Shoulder Rivet	8
3600226	1/4 x 11/16 Semi-Tube Steel Rivet	20
3600215	3/16 x 7/8 Semi-Tube Rivet	20
700086	Female Trunk Harness	5
700747	Male Trunk Harness	5
716012	3/8-16 x 3 3/4 Elevator Bolt	5
716013	3/8-16 Kep Nut	5
900371	Body Slide Snap	15
700188	1/4-20 x 1 1/4 Elevator Bolt	6
300225	3/8" Spacer	6
300123	1/16 x 17/64 Spacer	12



Top



YELLOWING CLEARANCE LIGHT

YELLOWING TAIL LIGHT

GREENING RIGHT TURN  
BROWNING BACK LIGHT

REAR

00

110V

YELLOWING CLEARANCE AND TAIL LIGHTS

GREENING RIGHT TURN  
BROWNING BACK LIGHTS

YELLOWING TAIL LIGHT

BLUEING LEFT TURN

BROWNING BACK LIGHT  
BACK UP LIGHT

